

Chia Yan Wei

* * *

At work and at play

Design projects

Bounce vegetable peeler

Product design and prototyping



Obleaobento stool

Product design and prototyping



Educational iPad App

Concept and illustration



Possible Building & Object Styles

2D/Pag-Up Book

- Different styles could be reviewed for a ratings test, or the most suitable style could be selected and applied
- Potential for conversion into landscape based games that can be used in class or purchased for use at home too



Basic lines and shapes



Abstract shapes could represent monuments or be further defined into buildings with more organic forms.



Textures help to bring out the function of the building and to add a storybook feel to the game.



Buildings with similar styles can also be created in 3D forms if necessary.



Exploration of textures reminiscent of gravel, sand, and stone is a key with the upcoming nature of the game. The use of textures and digital tools and textures differentiates the game from other 2D games in terms of its visual language.



Trees help to add life to the city. Unique shapes and colors could be used to suggest a different plant and climate.

Philips lighting control

User interface and experience design



rise



perk



lush



rest



themes



lighting



tv



dvd



music



hall

bedroom

bathroom

walkway



themes



lighting



tv



dvd



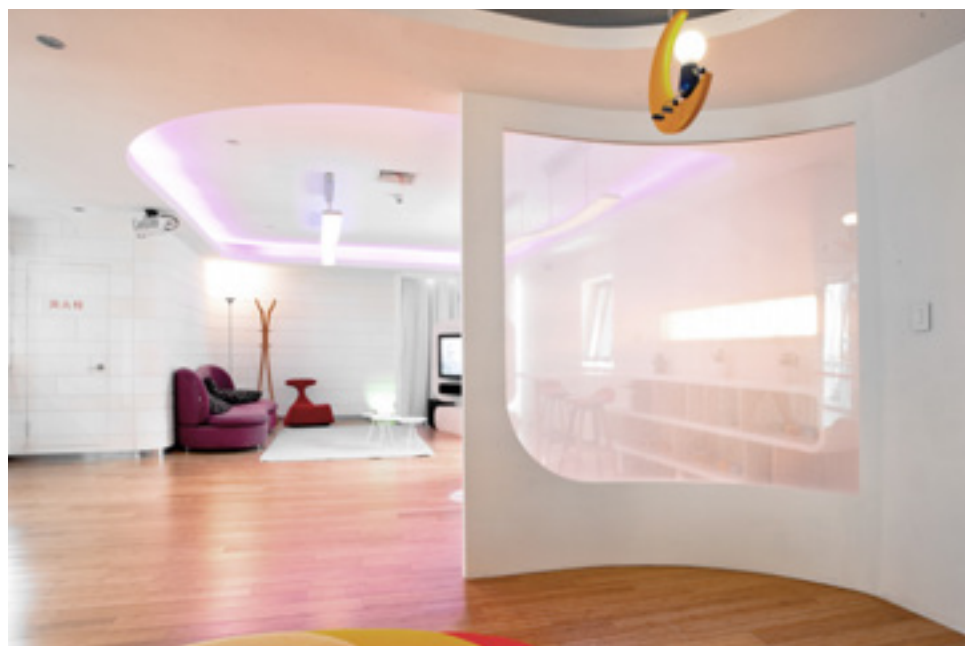
music



Philips future home concepts at the Shanghai World Expo

Conceptualisation and implementation





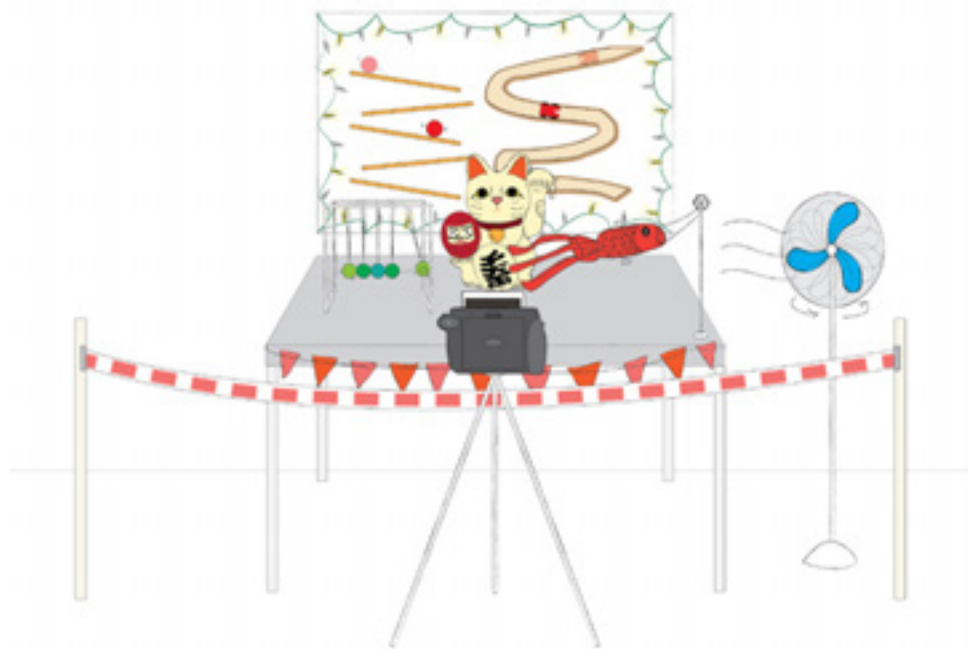




George Wong's art fun fair

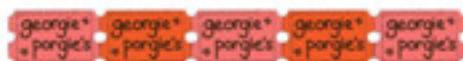
Branding and illustration











George Porgie's Marvellous Funfair is a project of the George Porgie's Foundation

George Porgie's Marvellous Funfair is open from 10am to 4pm
every day from 10am to 4pm
George Porgie's Marvellous Funfair is open from 10am to 4pm

The George Porgie's Marvellous Funfair is open from 10am to 4pm
Visit www.georgieporgies.com

George Porgie's Marvellous Funfair
is a project of the George Porgie's Foundation



CHANHAMPE
GALLERIES

COME AND PLAY!

georgie
porgie's
marvellous
funfair



how to play

- 1) Estimate the stress
- 2) Add your estimate to previous results
- 3) Plot a moment
- 4) Time a people
- 5) Send your people to www.gutenberg.org/cache/epub/69826/69826-h.htm
- 6) Estimate a 100 point from Google Page rank



Chennai Chutney Photo Exhibition

Branding and design of publicity materials





Selective Highlight

Logo design

Selective Highlight

A collective of contemporary Singaporean photographers

Open call for submissions

Please send your portfolio and write-up to george@selectivehighlight.com

International Confederation of Principals

Logo design Competition - Merit Award





ICP2009



Many Minds, One Heartbeat

Charting the New Educational Landscape

06 to 11 July 2009

Suntec International Convention Centre

9th World Convention of the
International Confederation of Principals 2009

Warmly hosted by the Academy of Principals (Singapore)

Deanna Ng Photography

Name card design



Agency for Integrated Care

Vintage calendar design



~ FEBRUARY 2011 ~

22

TUESDAY

S	M	T	W	T	F	S
		1	2	3	4	5
6	7	8	9	10	11	12
13	14	15	16	17	18	19
20	21	22	23	24	25	26
27	28					

Ang Chee Siang Bak Kwa

Poster and rewards card

ANG CHEE SIANG



美好滋味就在洪志香

ANG CHEE SIANG

美好滋味就在洪志香



REWARDS CARD

ANG CHEE SIANG

美好滋味就在洪志香



REWARDS CARD

Photography work

Kitchen stories

The way we do things in our family kitchen







Best supporting actors

Worth a second glance

What happens when we accord something ordinary with undue importance?

A hooded figure gazing at the setting sun

A stray plastic bag aglow with the late afternoon light

An oversized plastic ice cream cone

A grid of coloured balloons at a game stall

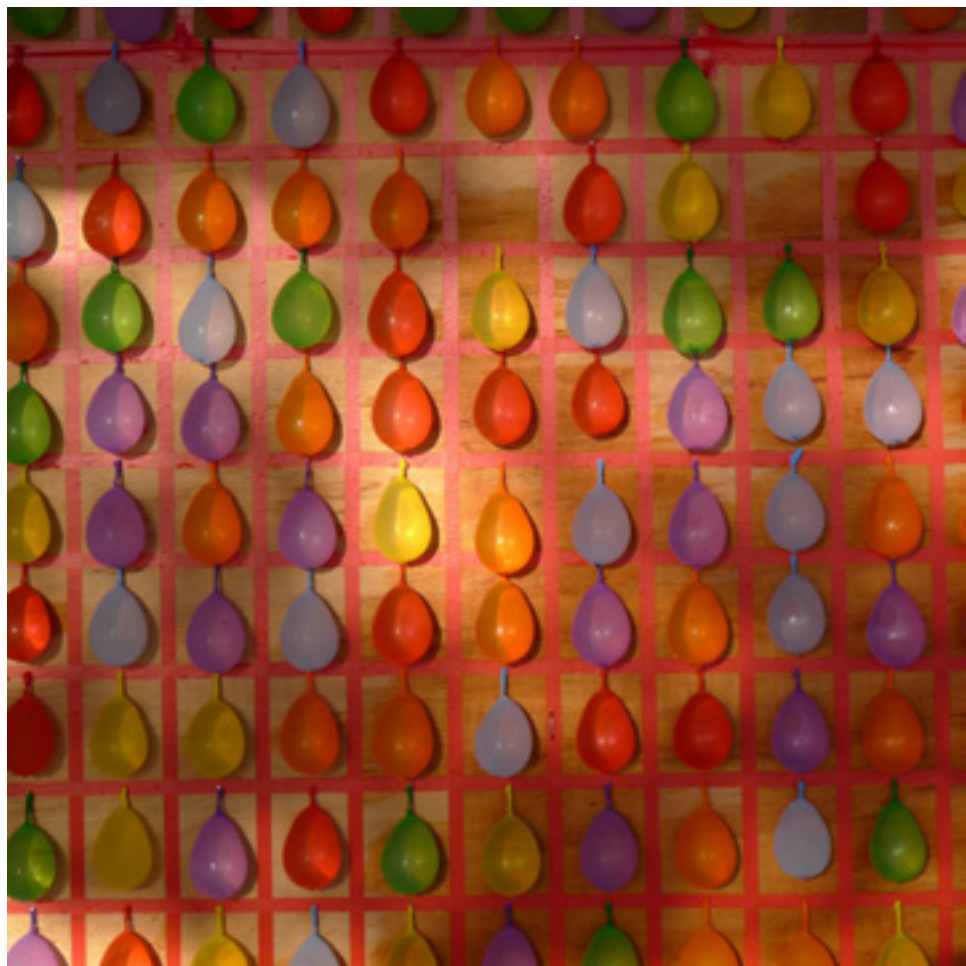
And perfectly embedded LEDs signalling the arrival of the train

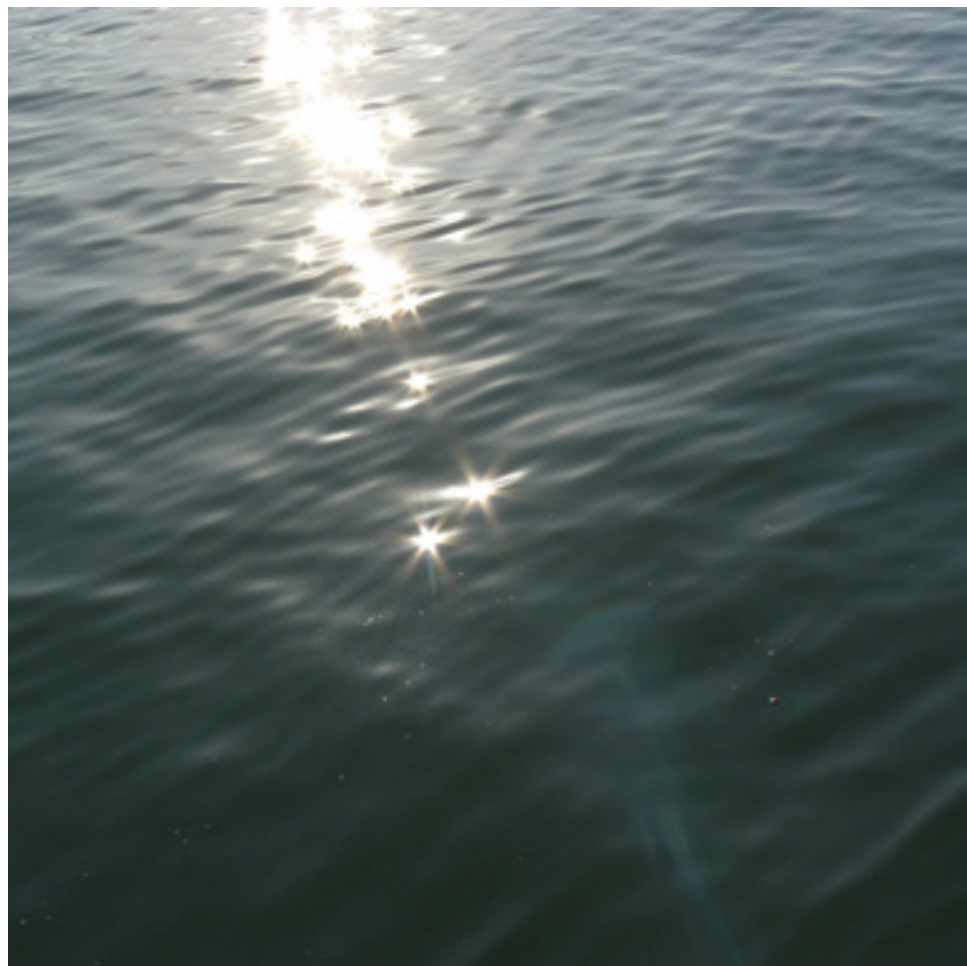
These are things we never quite pay attention to in our daily walks but yet are the very bits and pieces that form our everyday memories.

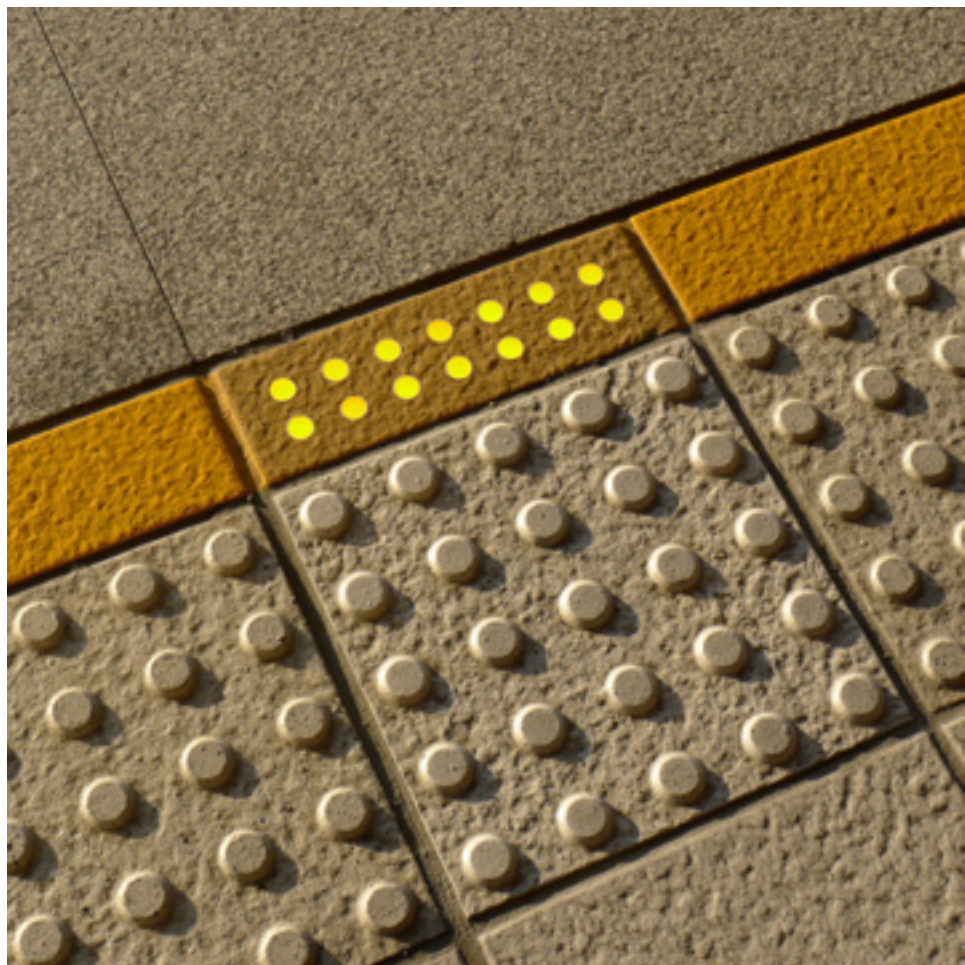












Too many damn walls

We are surrounded

I don't know what you might call them, but I'm sure you have seen them.

In a literal sense, the walls I'm talking about and am inspired by are the corrugated white walls around construction areas that you find everywhere you go nowadays.

Just what are they hiding from us or what are they hiding us from? Are they protecting us from something? Or are they protecting something from us? Why must we always keep constructing and rebuilding ever so often? And just why on earth are there so many of them around anyway??!!

These are just some of the questions I sought to explore and invite you to ask. In my series I encourage viewers to look up, over, around, into, below, beneath and beyond these mysterious ubiquitous white walls, and perhaps find along the way that we might want to do the same to the other walls – literal or otherwise that we might come across in our lives.

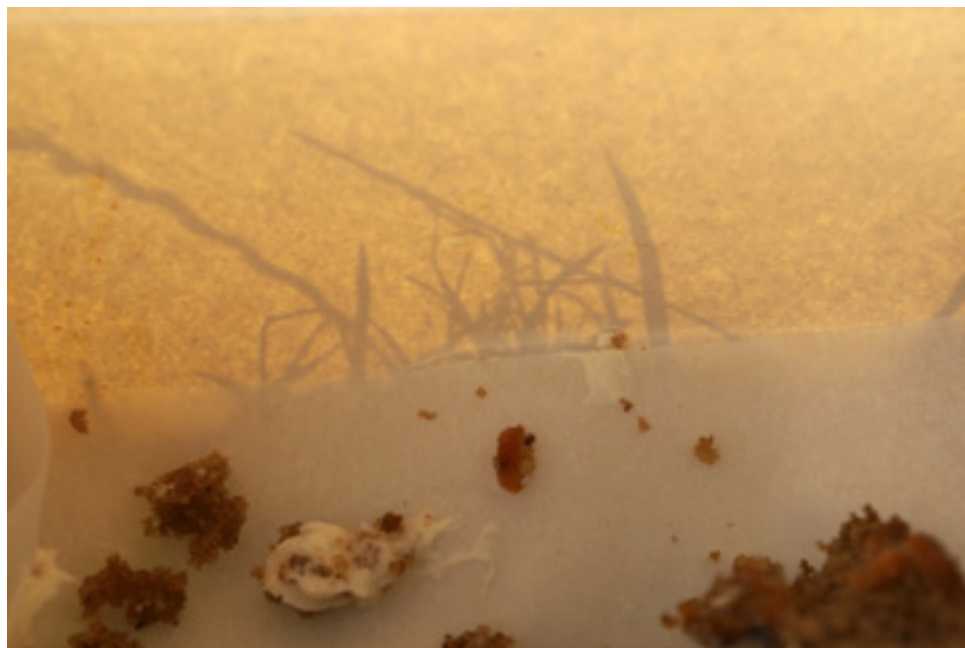




_____ with a view

Discovering hidden views in unexpected places





Experiencing education

Capturing stories from schools and the community



































Thank you for taking a look at my work.



About Yan Wei

Yan Wei works as a multidisciplinary designer and photographer and finds it only natural to use all her senses together with her heart and mind on a daily basis to observe, experience and understand the changing world around her and the people living and growing in it.

Schooled locally but having travelled extensively for work and play, she constantly applies her varied experiences in her creative work. As part of her degree programme, she spent a semester abroad in Sweden and exhibited her work in the Milan Design Fair.

Yan Wei has also worked on the design and implementation of future home concepts for Philips Shanghai in the Shanghai World Expo 2010. More recently, she has been exploring the application of experience design in the home environment with new homeowners. She also serves as an adjunct lecturer at the Singapore Polytechnic Design School.

She continues to work on various creative projects across a range of disciplines and industries and strongly believes in creative collaboration.

Chia Yan Wei

hello@chiayanwei.com

www.chiayanwei.com

fb.com/chiayanweiatworkandatplay

All rights reserved © 2004-2017